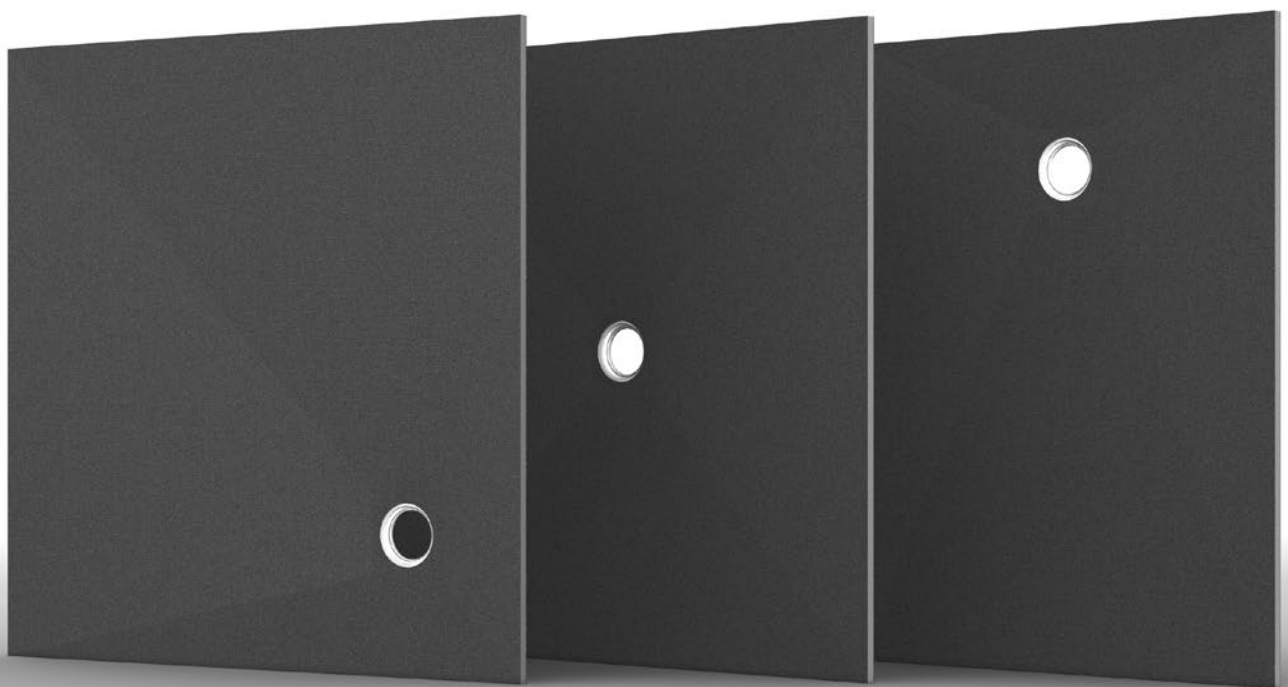
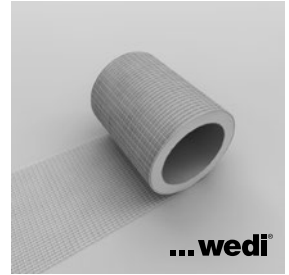
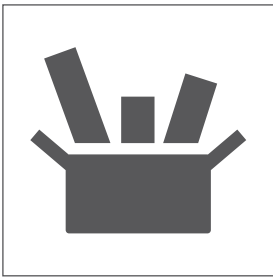

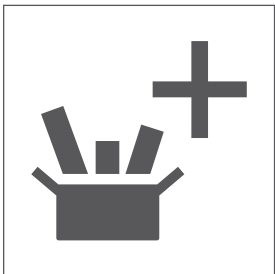
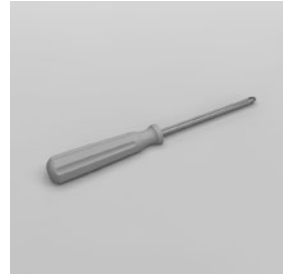
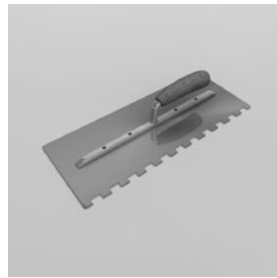
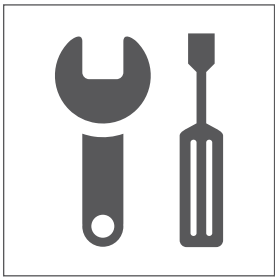


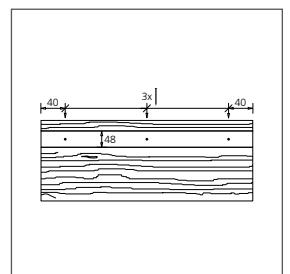
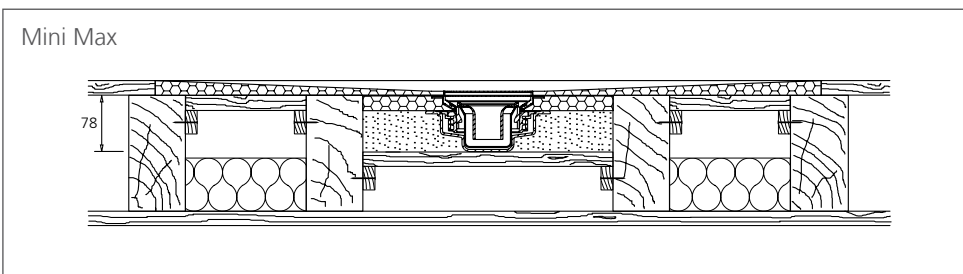
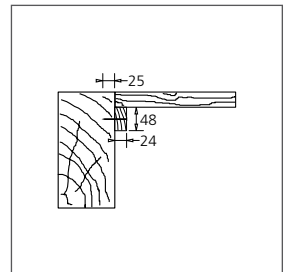
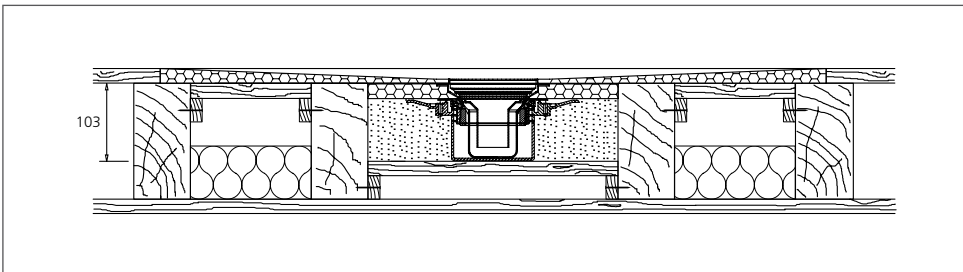
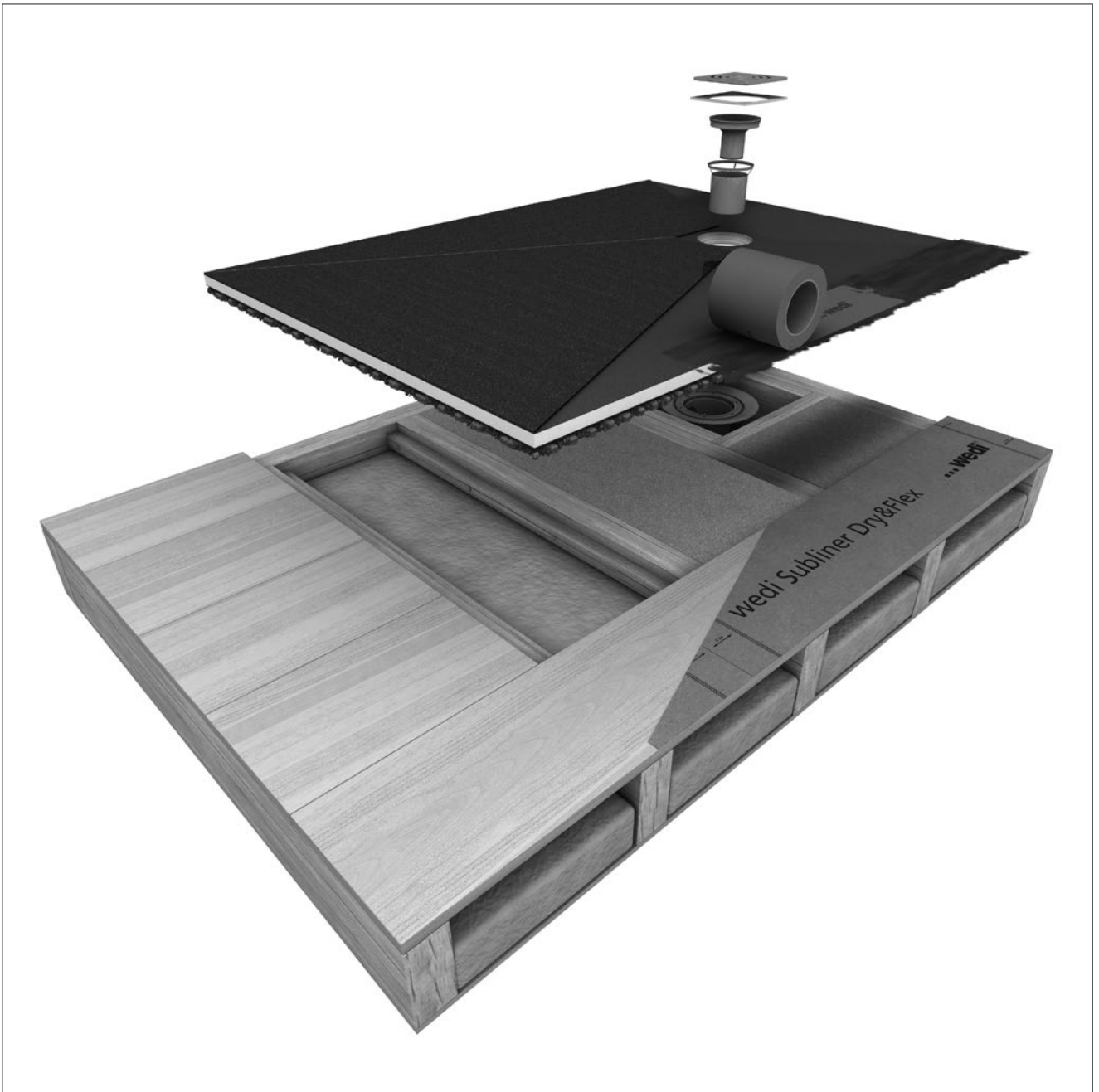
# Fundo Ligno

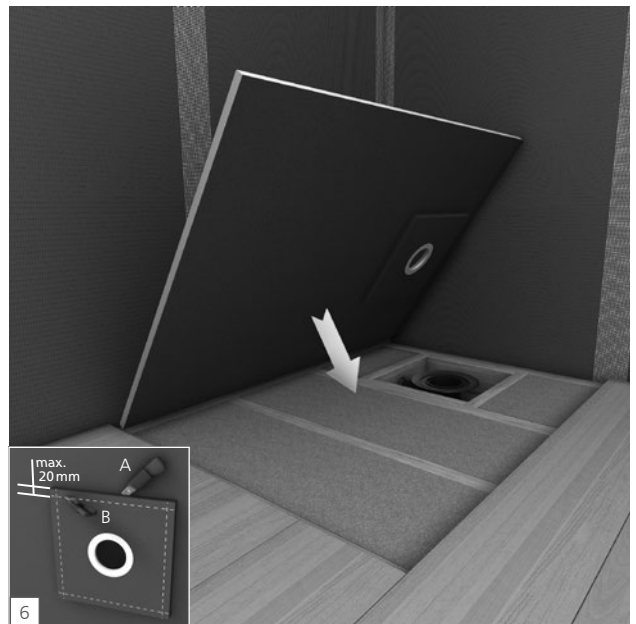
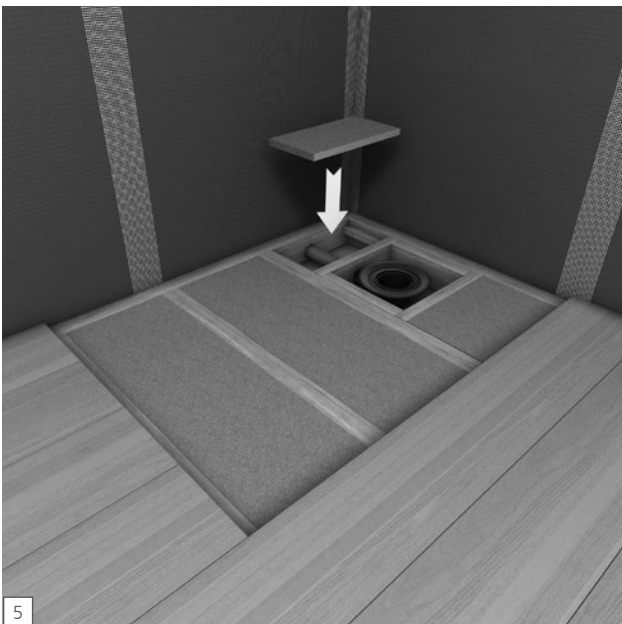
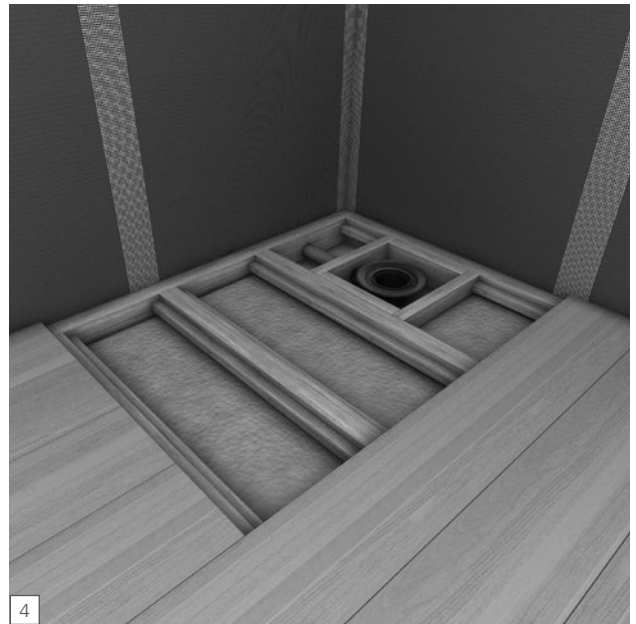
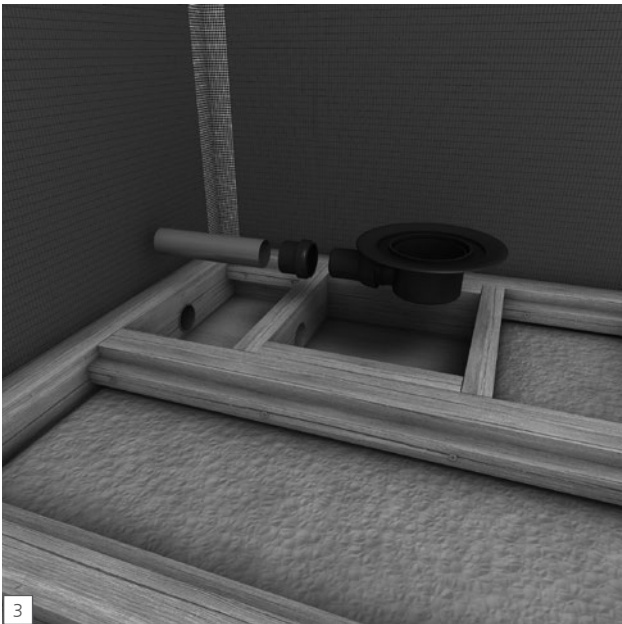
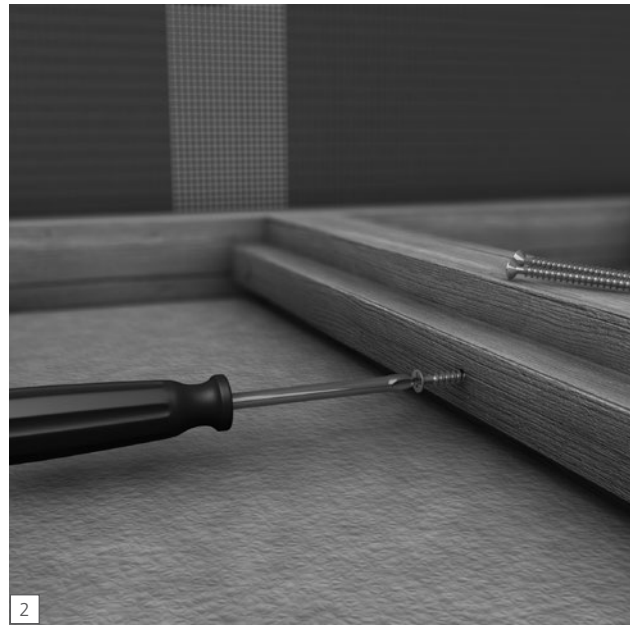
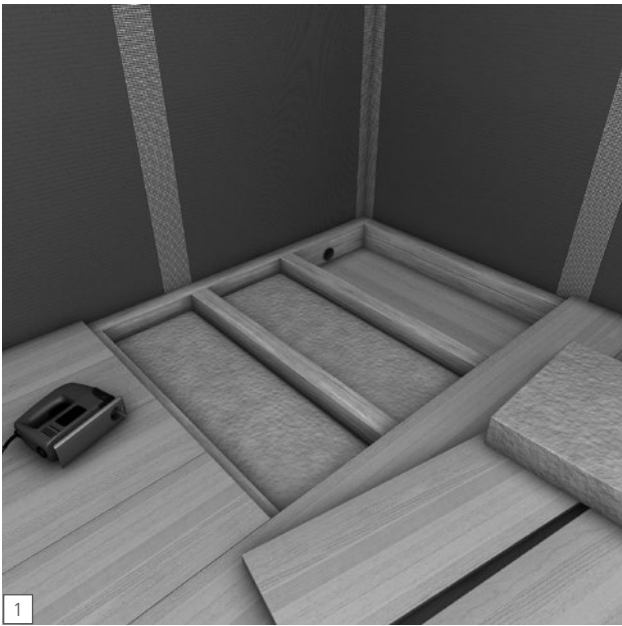


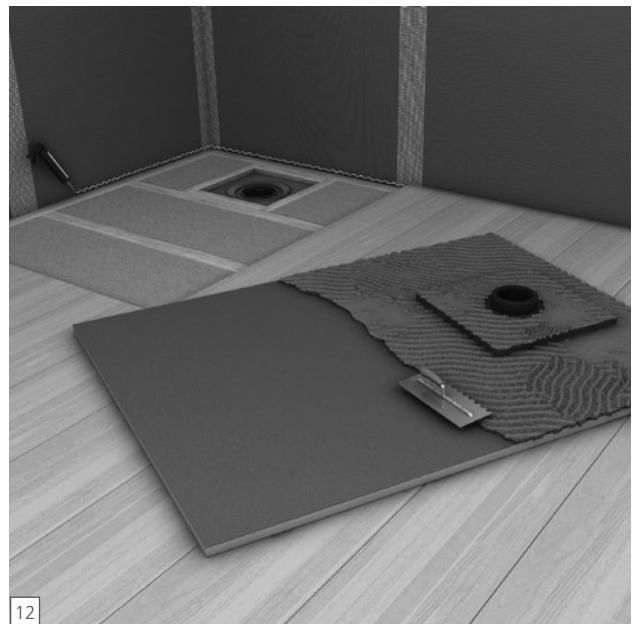
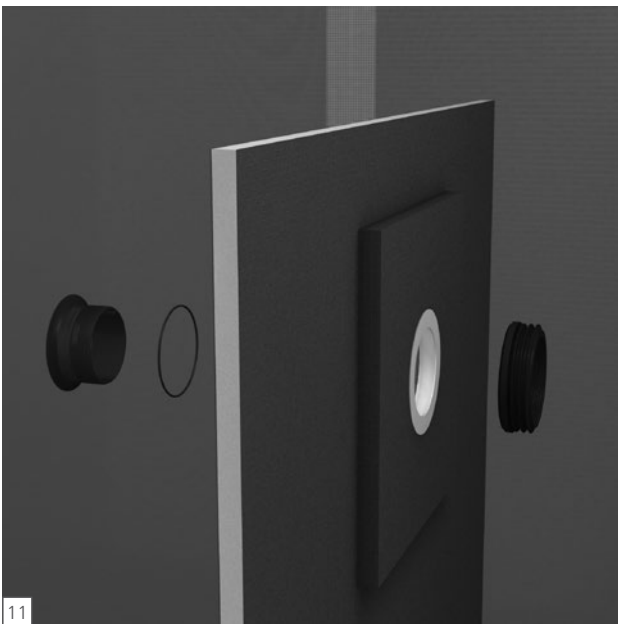
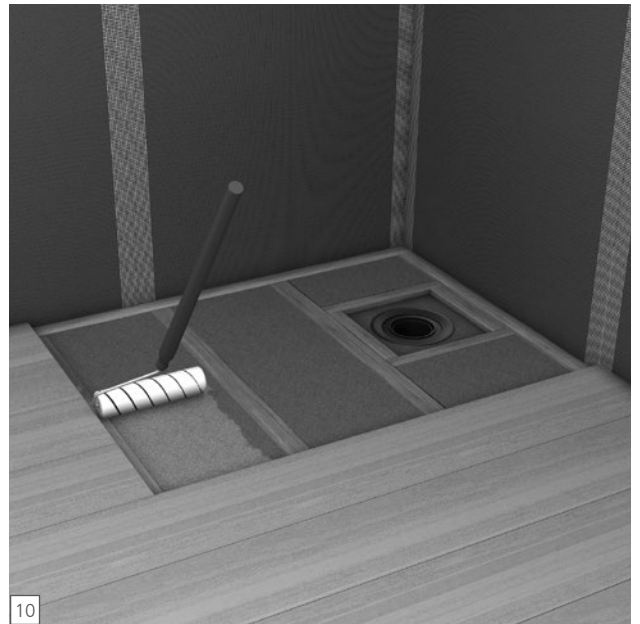
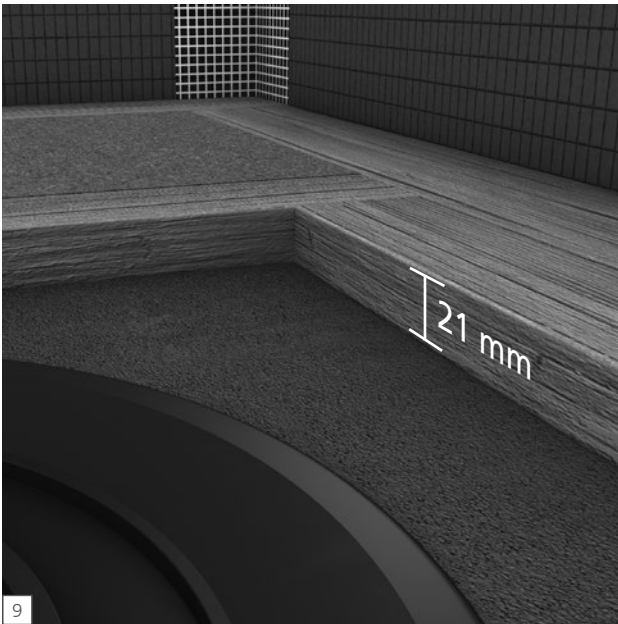
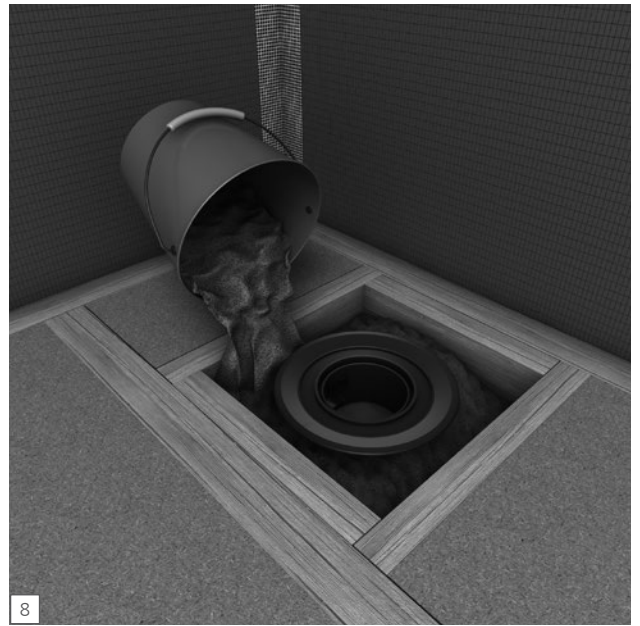
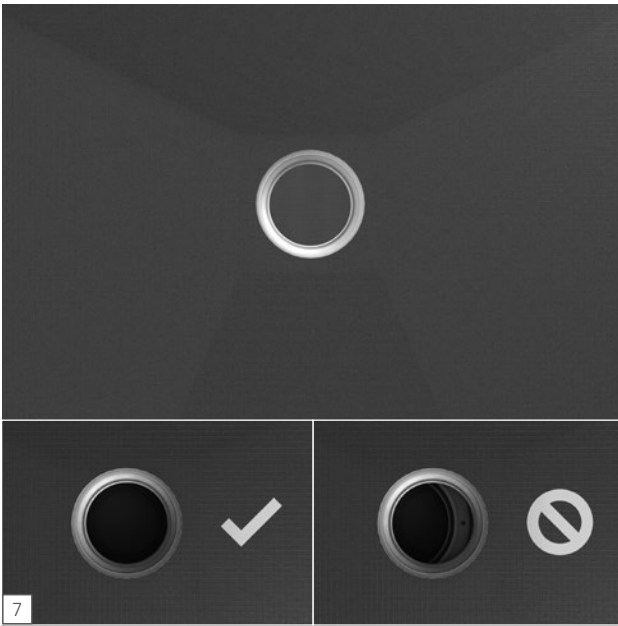


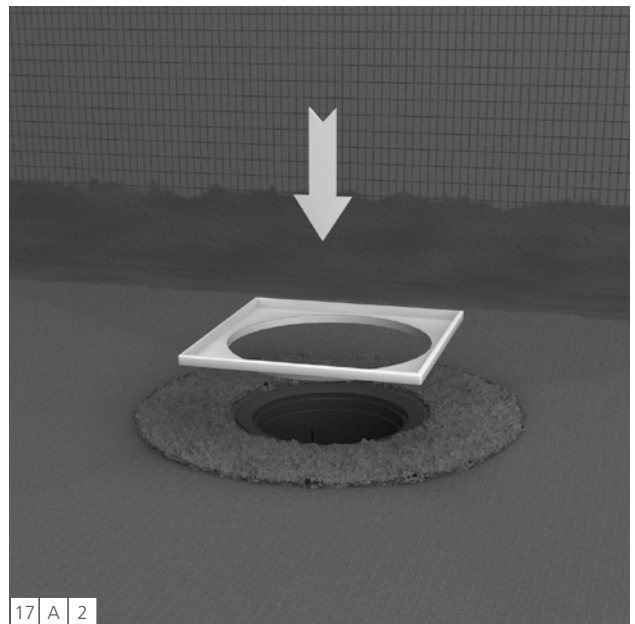
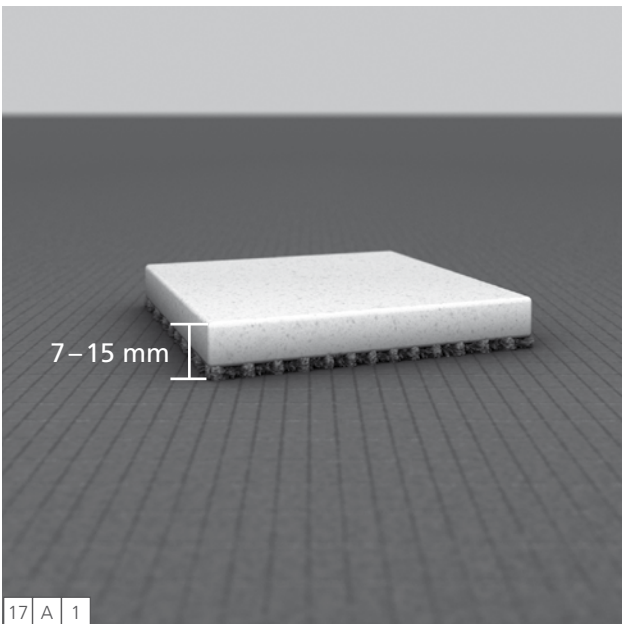
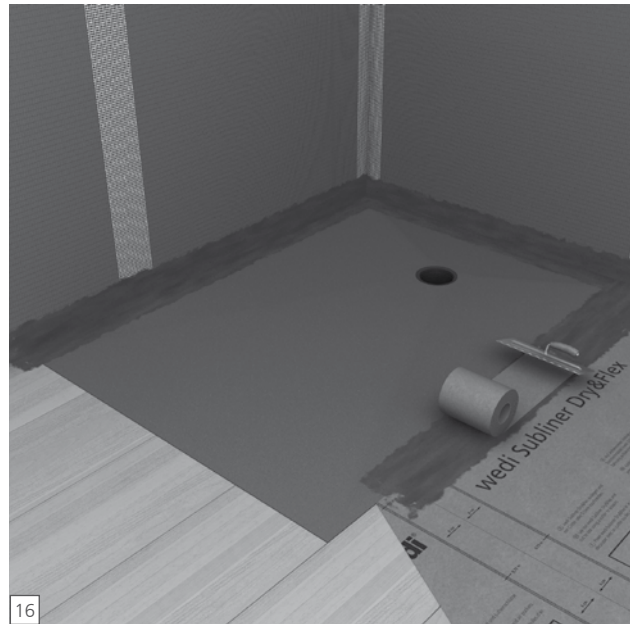
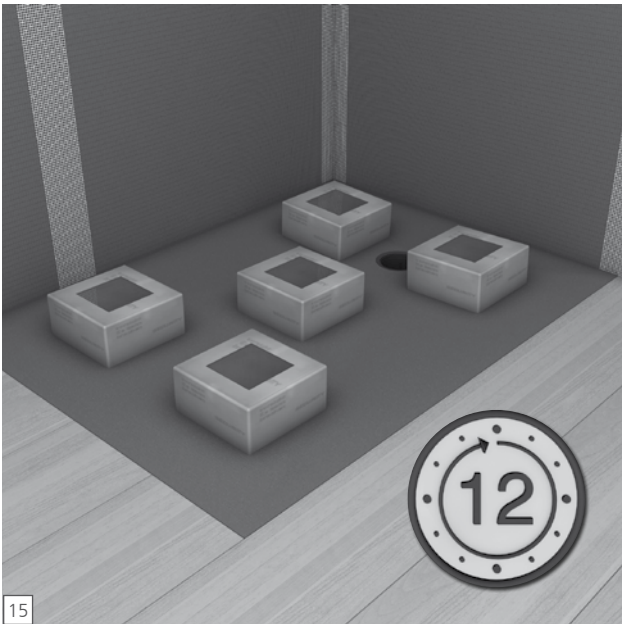
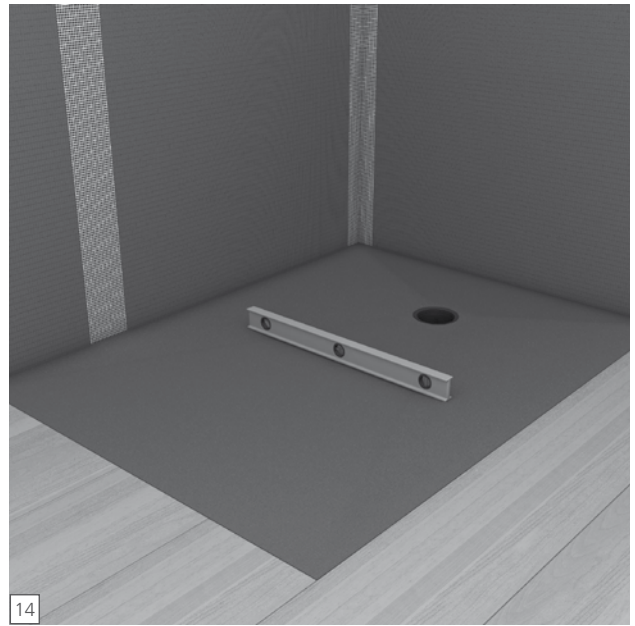
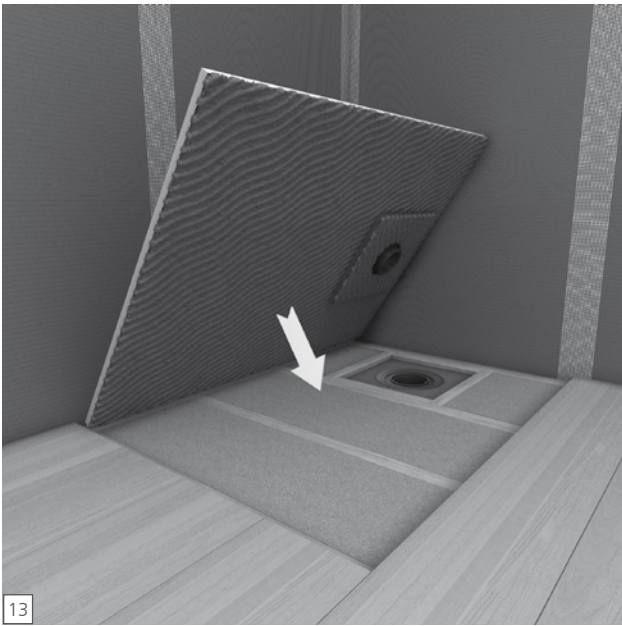

0799 (System 2+)
wedi GmbH Hollefeldstraße 51 48282 Emsdetten 13 0799-CPR-132 DoP 0001
ETA-13/0385 ETAG 022 Teil 3
Bausatz mit wasserdichten Platten und weiteren Komponenten zur Herstellung einer Abdichtung unter einer Nuttschicht für die Verwendung in innen liegenden Nassbereichen Klassifizierung des Systems und deklarierte Produkt- und Systemeigenschaften siehe Anhang 1 der ETA-13/0385

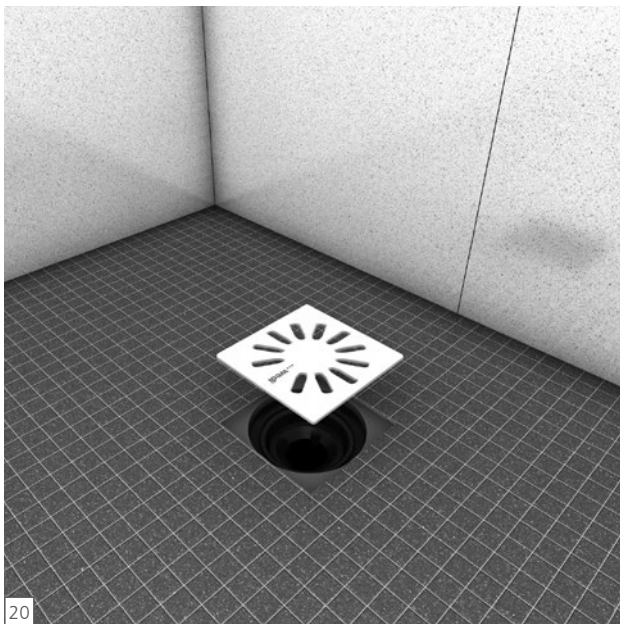
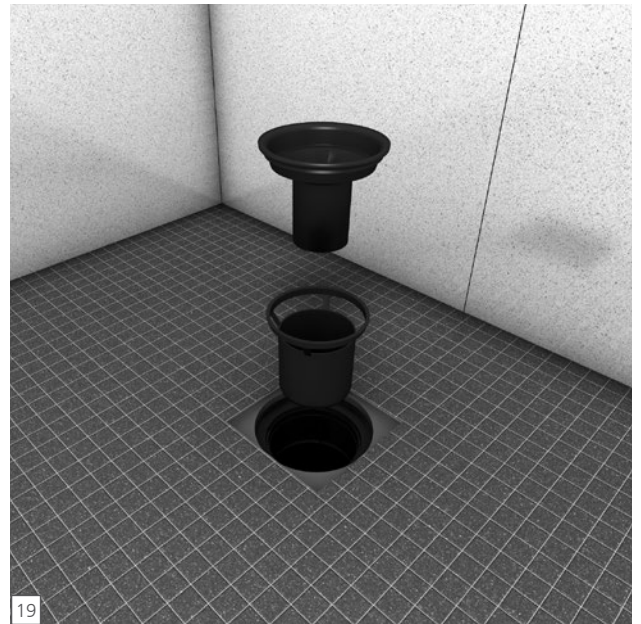
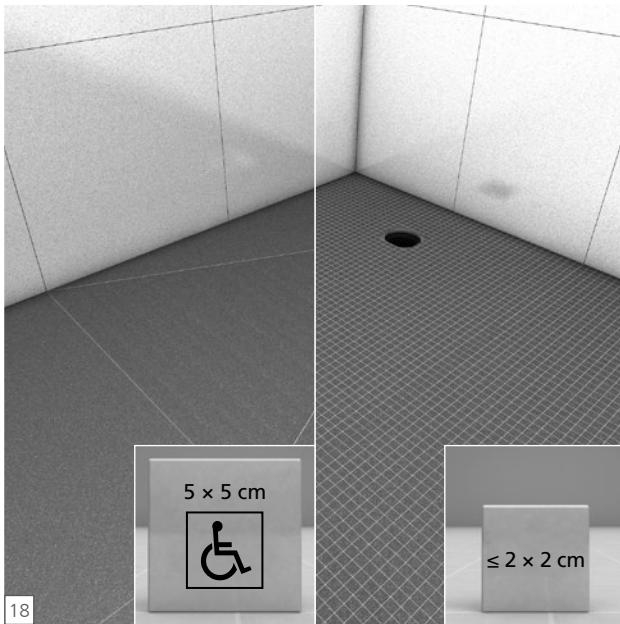
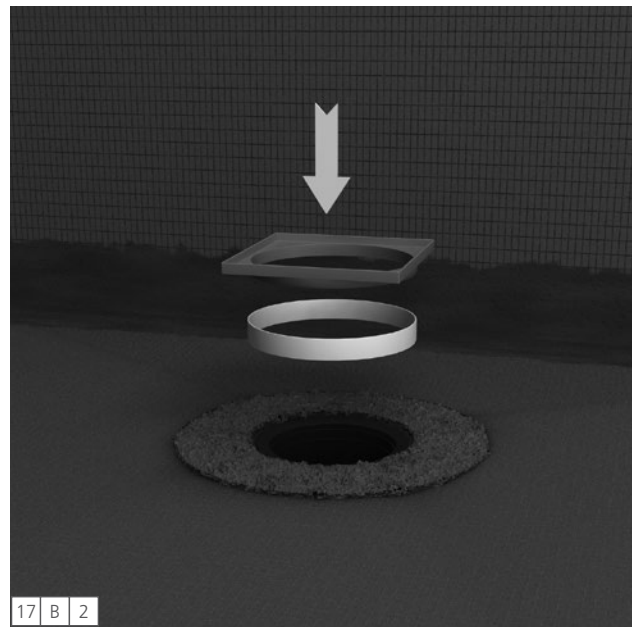
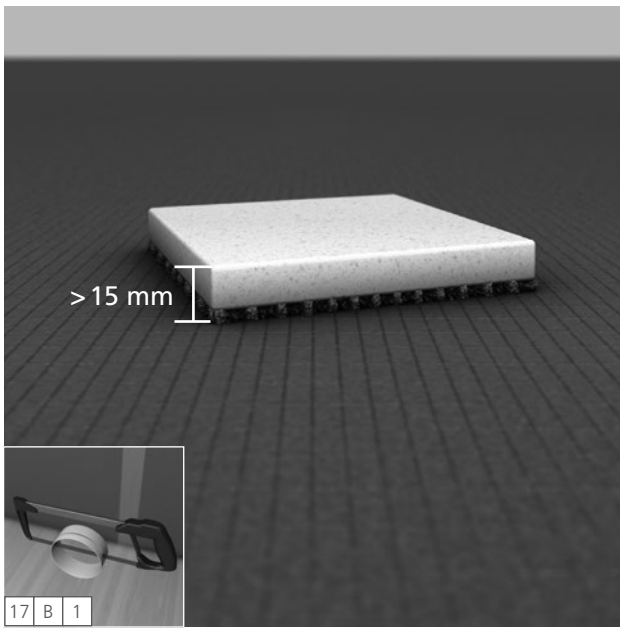






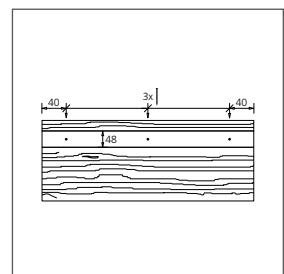
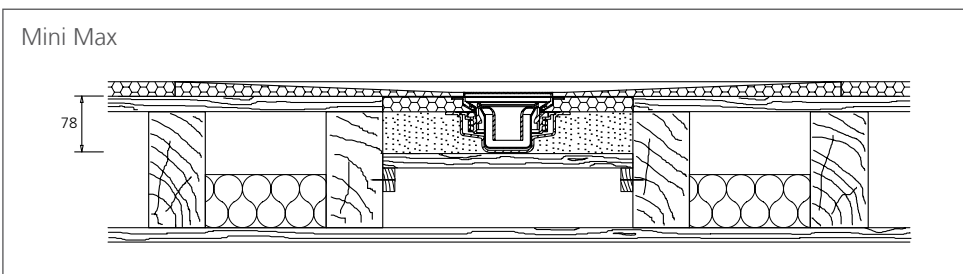
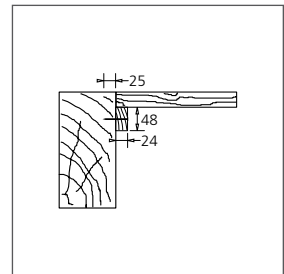
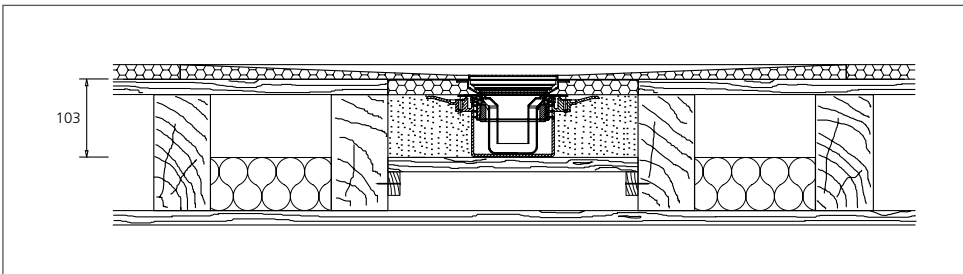
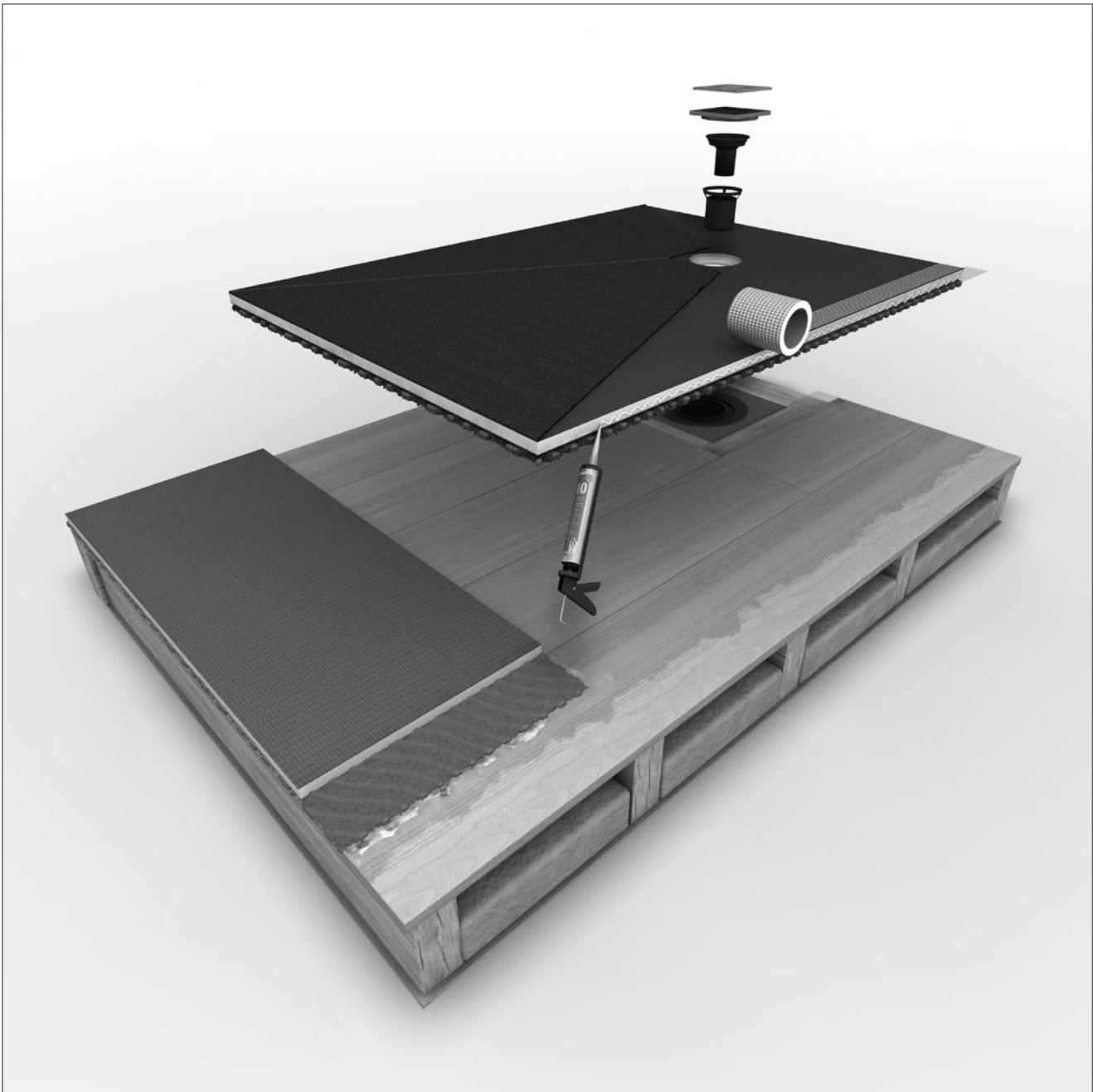


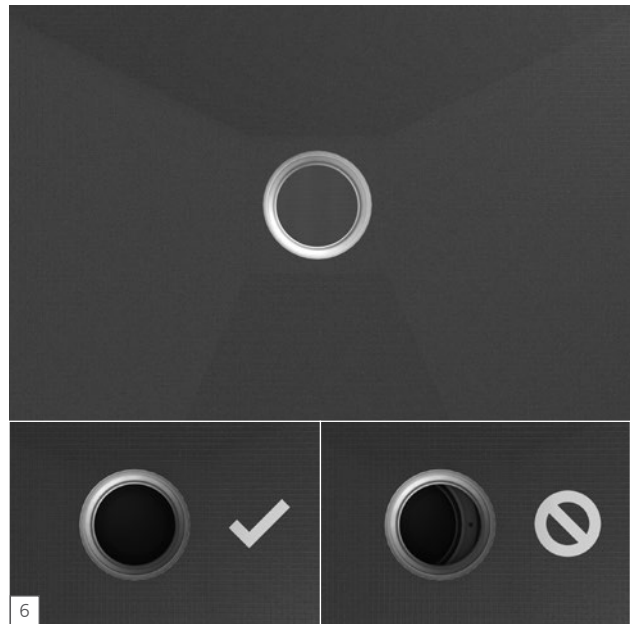
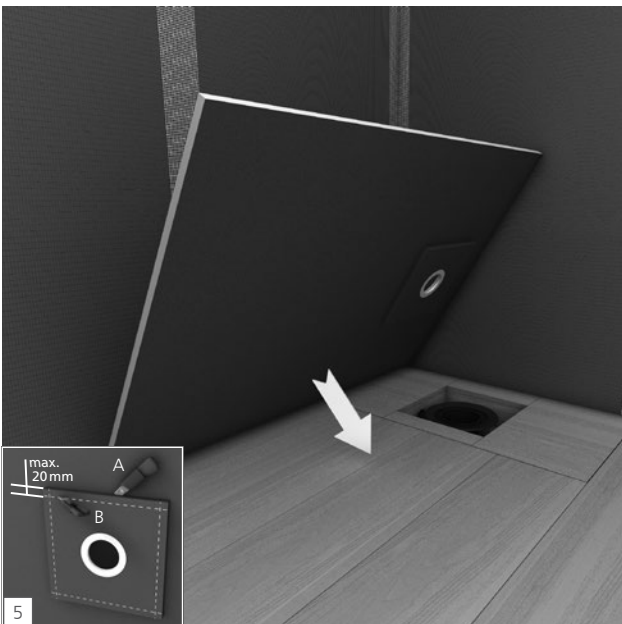
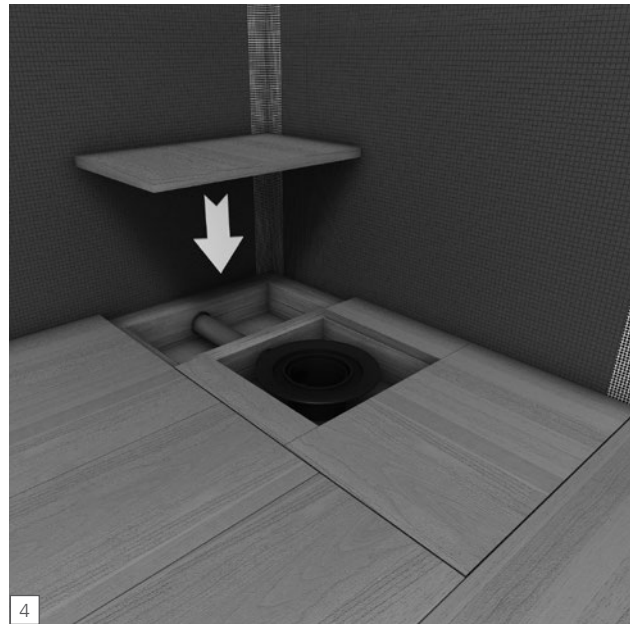
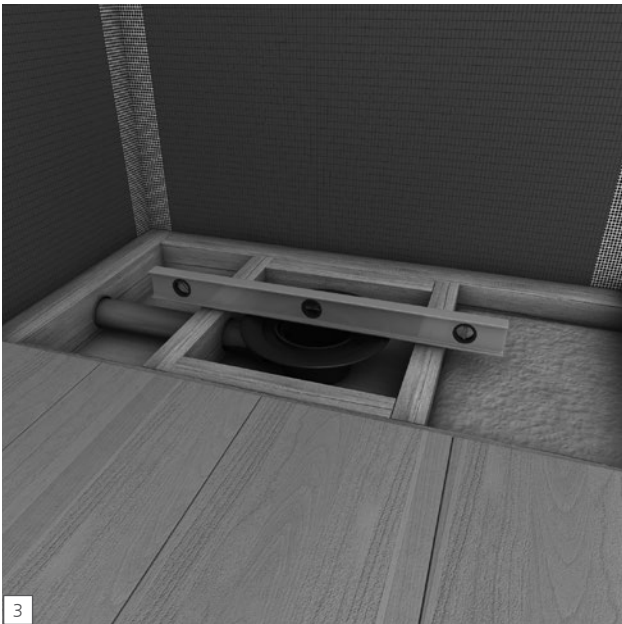
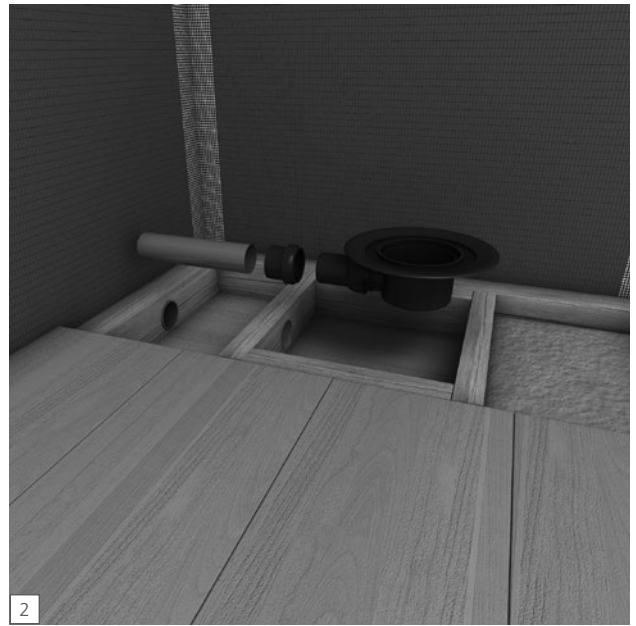
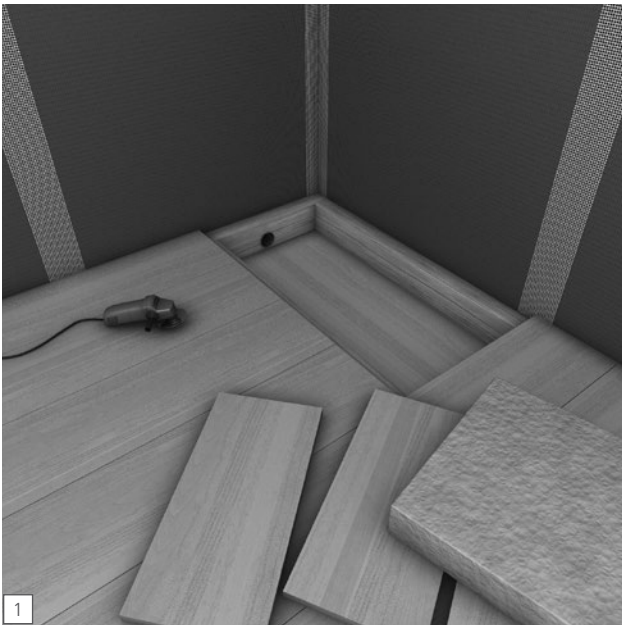


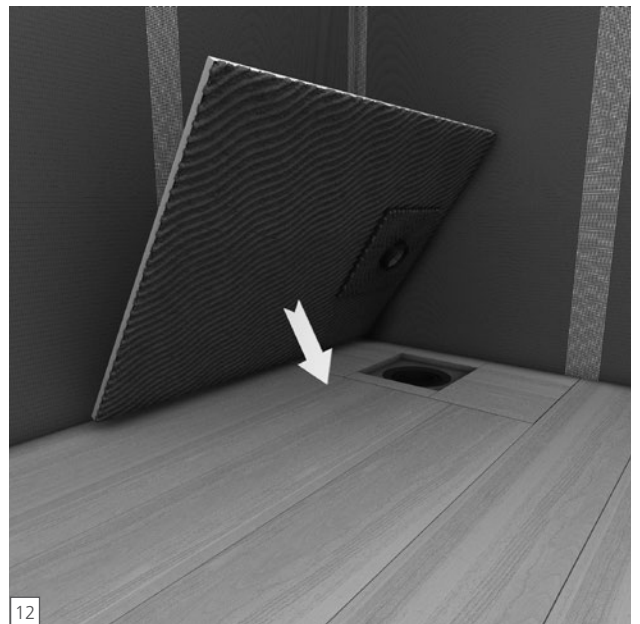
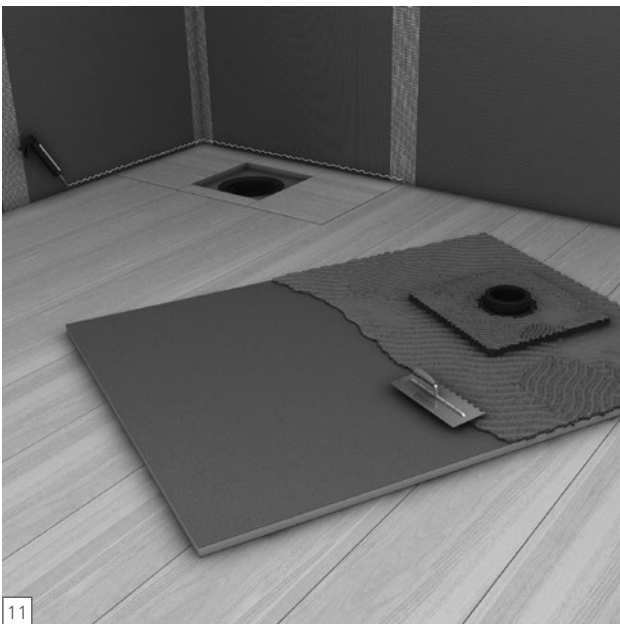
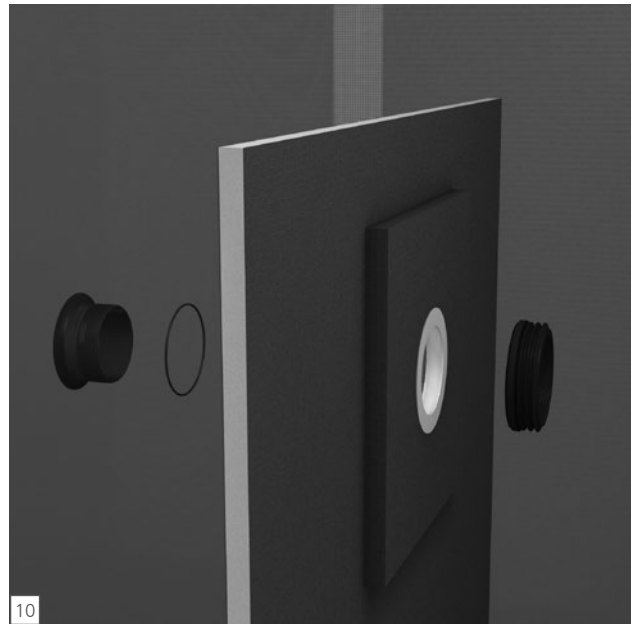
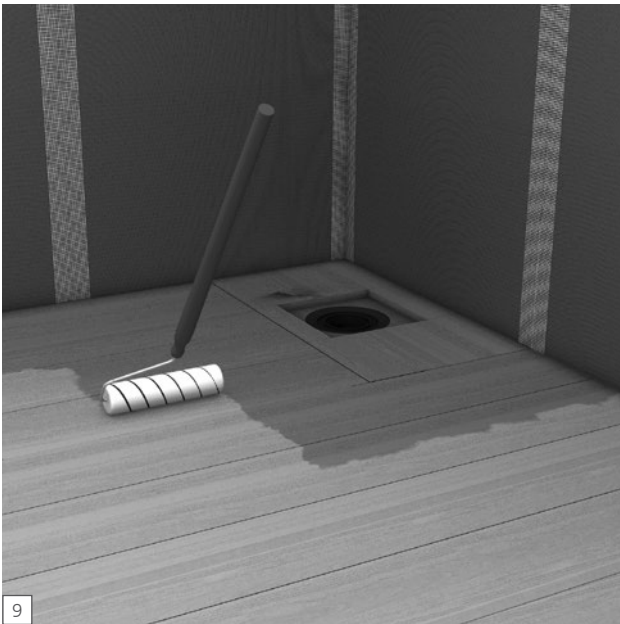
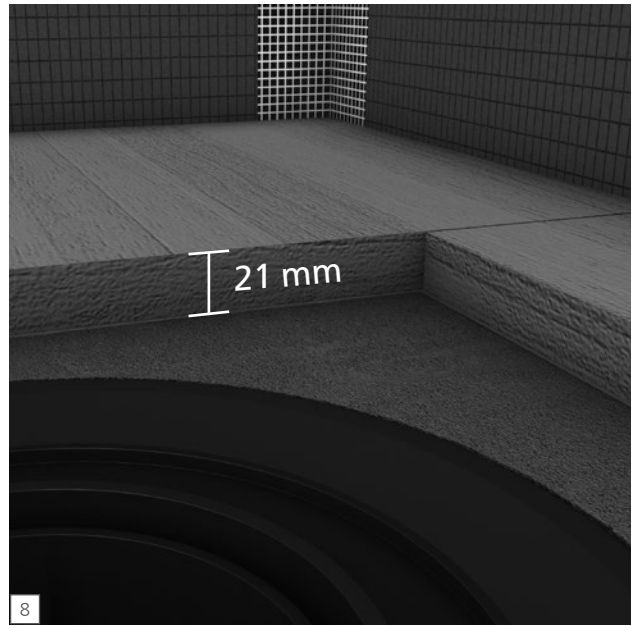
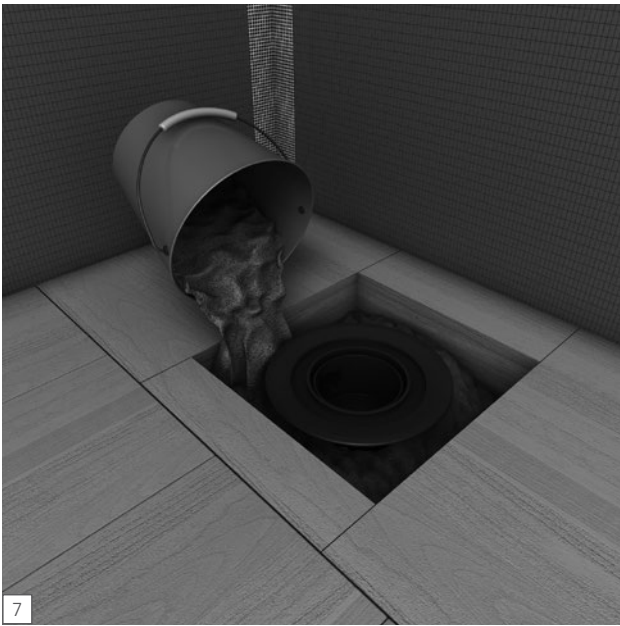


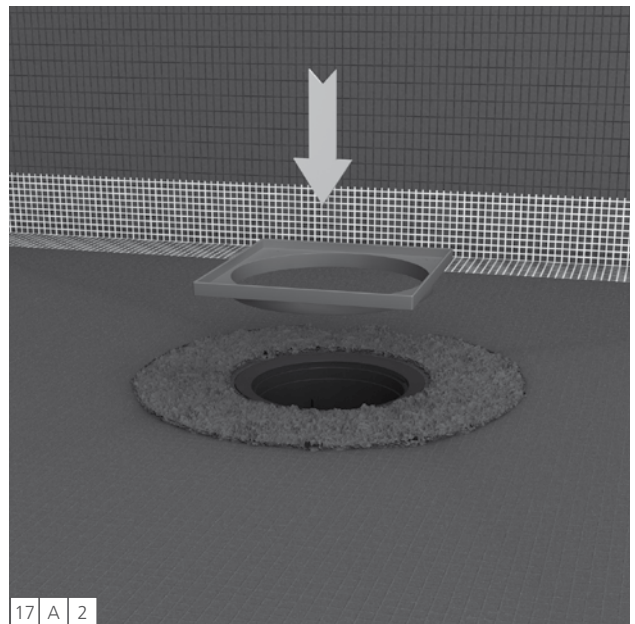
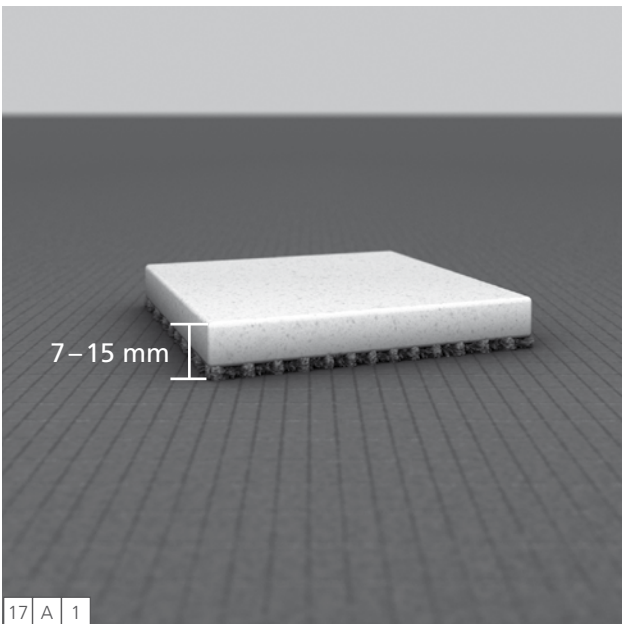
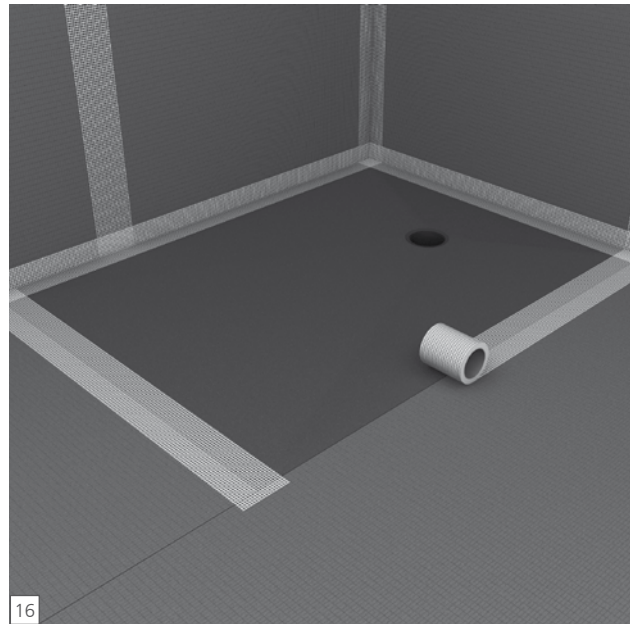
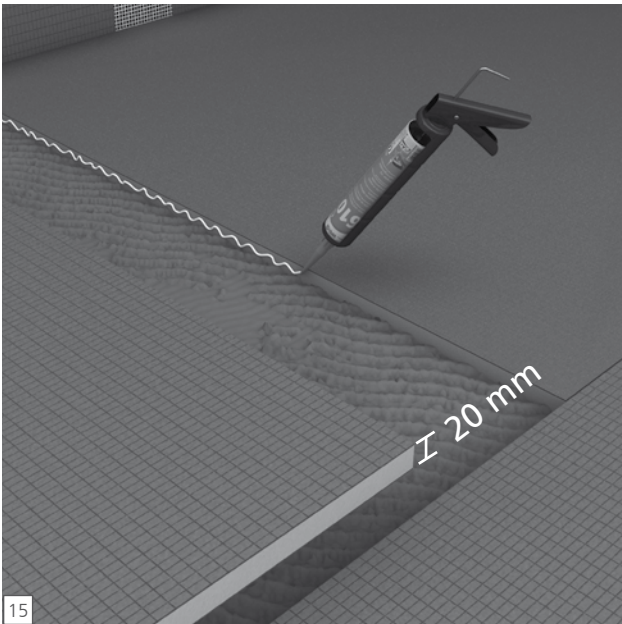
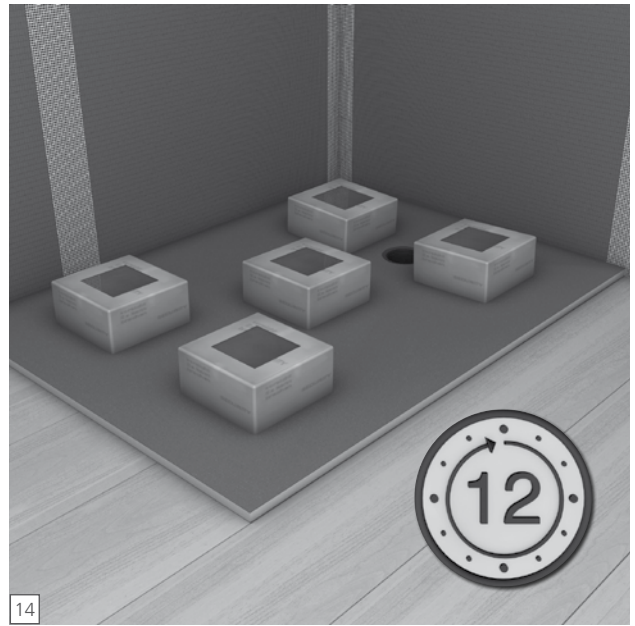
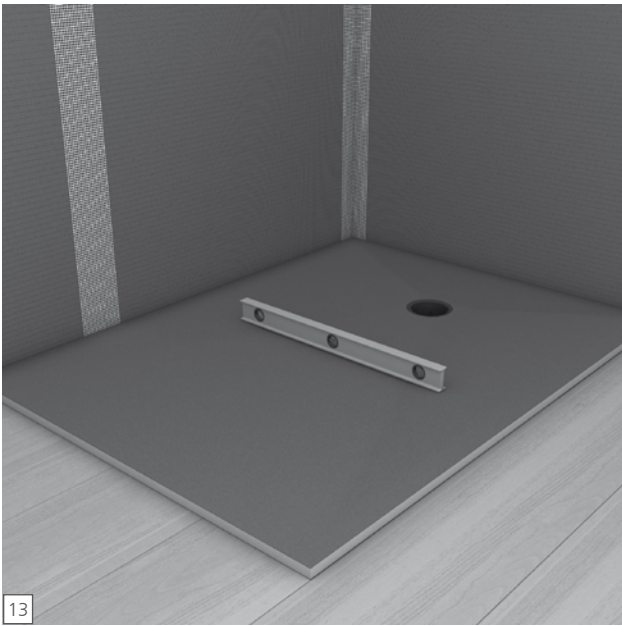


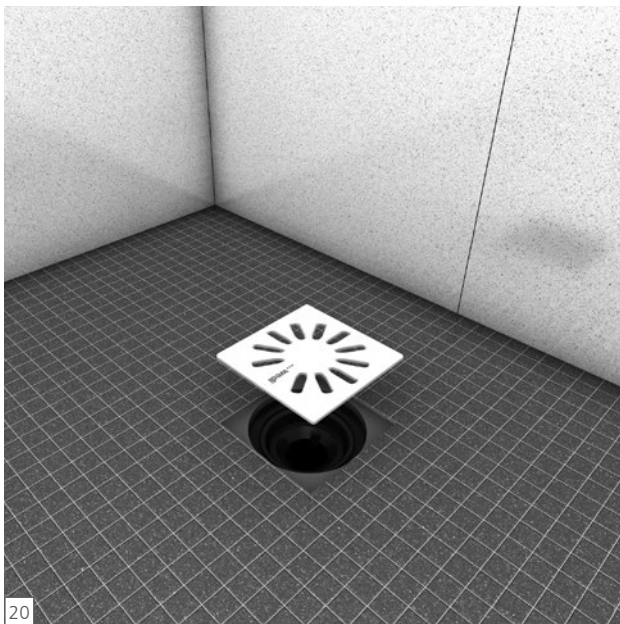
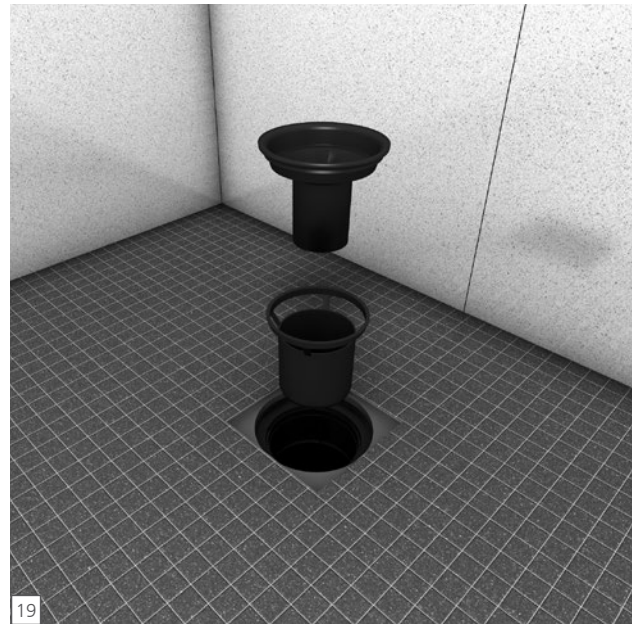
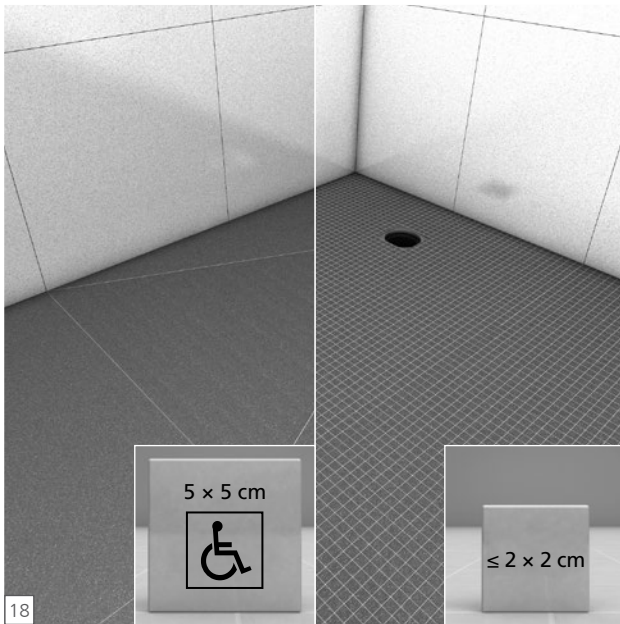
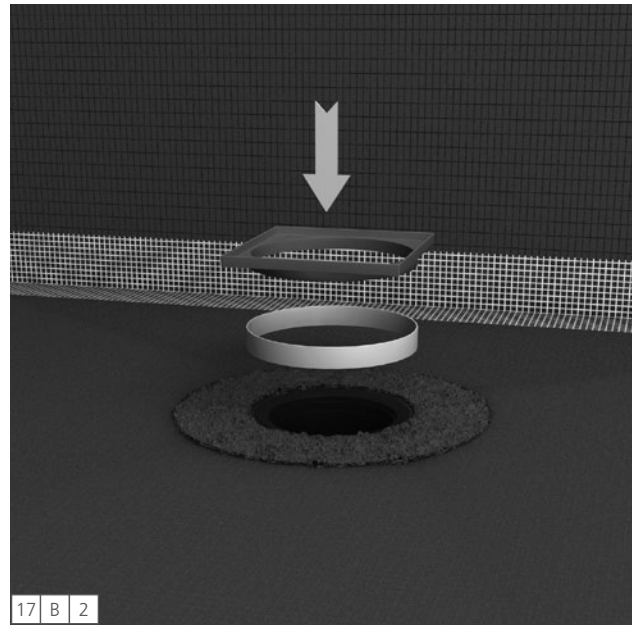
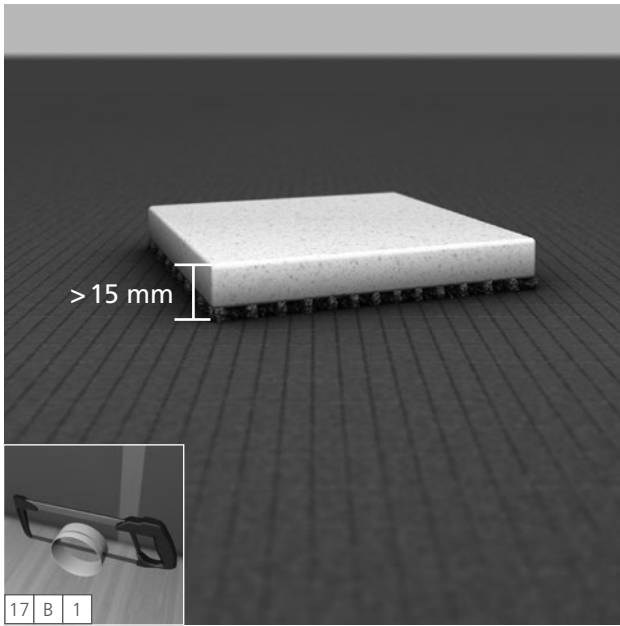
















**wedi GmbH**

Hollefeldstraße 51  
48282 Emsdetten  
Deutschland

Telefon +49 2572 156-0  
Telefax +49 2572 156-133

info@wedi.de  
www.wedi.eu