

Schlüter®-SHELF

Decorative shelf solution
For integrated and retrofit installation

17.1

Product data sheet

Application and function

Schlüter®-SHELF is a integrated shelf solution - available in brushed stainless steel or aluminium with the true-to-touch TRENDLINE textured finishes - in the STYLE designs FLORAL and CURVE. It can be used as a storage shelf in all tiled wall areas (e.g., showers, tiled kitchen surfaces).

Schlüter®-SHELF-E are shelves in three different shapes for installation in corners. The shelves can be directly integrated into the tile assembly during tile installation or retrofitted into the joints of tiled walls, using the 2 mm attachment lugs. The corner installation and an application of silicone ensures optimum load transfer.

Schlüter®-SHELF-W are rectangular shelves with two trapezoid perforated anchoring legs for adhesive bed installation in wall areas. These are integrated into the tile assembly during tile installation. The anchoring legs and an application of silicone ensures optimum load transfer.

Schlüter®-SHELF-N are rectangular shelves for use in pre-fabricated Schlüter®-KERDI-BOARD-N niches. They can be directly integrated into Schlüter®-KERDI-BOARD-N niches during tile installation for a precise fit. Their placement on the tile edges and subsequent application of silicone ensures optimum load transfer.

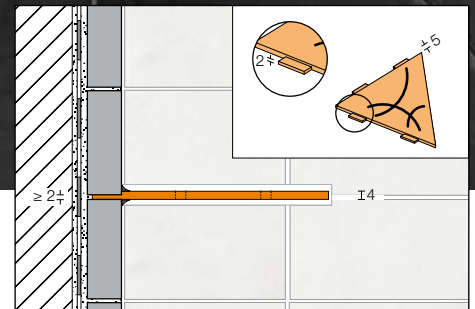
Material

Schlüter®-SHELF is available in the following material versions:

EB = brushed stainless steel

V2A material no. 1.4301 = AISI 304

TS = textured aluminium



Schlüter®-SHELF-E

Material properties and areas of application:

Schlüter®-SHELF is available in a wide variety of materials and finishes. In special cases, the suitability of the shelf must be verified, based on the anticipated chemical or mechanical stresses. The information provided below is intended as a general guideline.

Schlüter®-SHELF-EB is made of brushed stainless steel V2A (material no. 1.4301 = AISI 304). Stainless steel is particularly well suited for applications that, in addition to high mechanical stresses, require resistance to chemicals such as acidic or alkaline substances or cleaning agents. Even stainless steel is not resistant to all chemical stresses, and may be affected by, e.g., hydrochloric and hydrofluoric acid or certain chloride



and brine concentrations. In certain cases, that also applies to seawater pools. Special anticipated stresses should therefore be verified in advance.

Schlüter®-SHELF-TS (textured coated aluminium) features surfaces with a natural appearance. The aluminium is pre-treated (chrome-plated) and has a polyurethane powder coating. The colour-stable coating is UV and weather-resistant. Visible edges should be protected against abrasion.

Installation

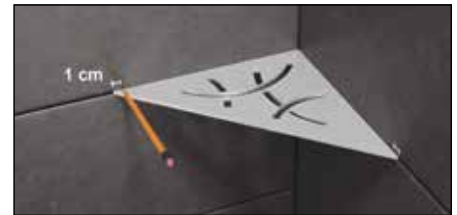
Schlüter®-SHELF-E

Corner – installed in conjunction with the tile

1. Install the tile covering with a joint width of ≥ 2 mm.
2. Once the tile adhesive has set, position Schlüter®-SHELF-E and mark the tile, moving about 1 cm from the outside edge of the shelf toward the inside. Remove the shelf during grout application to protect it against staining. Leave the joints in the marked area open.
3. Once the grout material has set, the shelf can be put in its final position.
4. Apply a silicone bead around it on all sides.
5. Observe the curing time of the silicone bead before using the shelf.



Re 1.



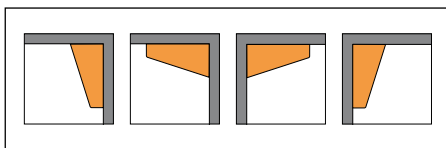
Re 2.



Re 3.



Re 4.



Installation options for Schlüter®-SHELF-E-S3



Corner - retrofit installation

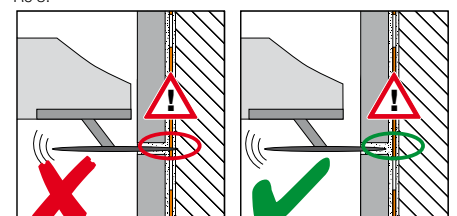
1. Determine the joint where Schlüter®-SHELF-E is to be placed.
2. Now mark the areas where the grout needs removing to accommodate the attachment lugs.
3. Remove the grout with a suitable tool (multi-tool, angle grinder etc.).
Caution: Observe the depth of the cut to avoid damaging any waterproofing layers installed behind the tiles.
4. Position the shelf and apply a silicone bead around it on all sides.
5. Observe the curing time of the silicone bead before using the shelf.



Re 2.



Re 3.



Re 3.



Re 4.



Re 1.



Re 2.



Re 3.

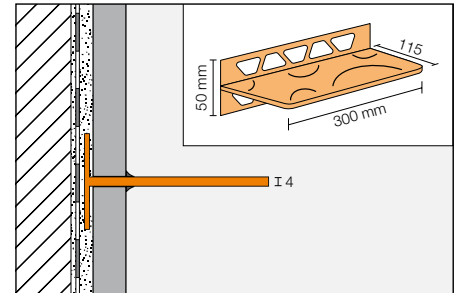


Re 4.

Schlüter®-SHELF-W

Area – install only in conjunction with the tile

1. Since the 4 mm material thickness of the shelf is usually larger than the tile joint, an opening must be created in the tile to allow the shelf to fit. To ensure a uniform joint appearance, we recommend creating this opening in the tile below the shelf.
2. Install the tiles to the height where Schlüter®-SHELF-W is to be placed. Insert the 1 mm anchoring leg of the shelf into the adhesive layer of the newly installed tile.
3. Now continue the tile installation in the place where the upper anchoring leg is positioned.
4. Once the grout material has set, apply a silicone bead around the shelf on all sides.
5. Observe the curing time of the silicone bead before using the shelf.

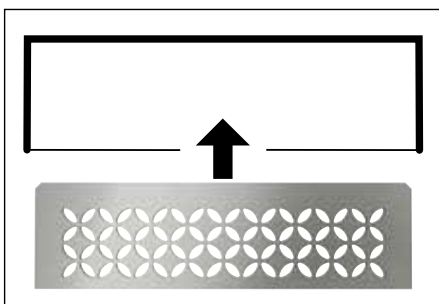


Notes

Schlüter®-SHELF requires no special maintenance or care. Do not use abrasive cleaning agents on sensitive surfaces. Stainless steel surfaces exposed to the environment or aggressive substances should be cleaned periodically using a mild household cleaner. Regular cleaning maintains the neat appearance of stainless steel and reduces the risk of corrosion. All cleaning agents must be free of hydrochloric and hydrofluoric acid. Avoid the contact with other metals, such as regular steel, to prevent corrosion. This also includes installation tools such as trowels or steel wool, e.g. for the removal of adhesive and grout residue.



Re 1.



Re 2.

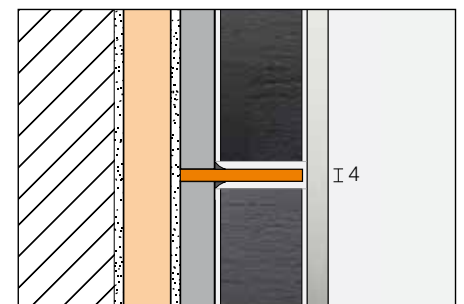
Schlüter®-SHELF-N

Niches - Installation in Schlüter®-KERDI-BOARD-N

1. Install the tiles within the niche to the height where Schlüter®-SHELF-N is to be placed.
2. Loosely place Schlüter®-SHELF-N on the edge of the tile – with the rounded edges facing back – to replace the joint within the niche. Now continue the tile installation.
3. Once the grout material has set, apply a silicone bead around the shelf on all sides.
4. Observe the curing time of the silicone bead before using the shelf.



Re 3.





Product Overview

Schlüter®-SHELF-E (for corners)

EB = brushed stainless steel,
TS = textured coated aluminium

| SHELF-E | S1 | S2 | S3 |
|---------|----|----|----|
| EB | • | • | • |
| TSI | • | • | • |
| TSSG | • | • | • |
| TSDA | • | • | • |



Schlüter®-SHELF-E-S1 (CURVE, TSI)



Schlüter®-SHELF-E-S2 (FLORAL, EB)



Schlüter®-SHELF-E-S3 (CURVE, TSSG)

Schlüter®-SHELF-W (for wall areas)

EB = brushed stainless steel,
TS = textured coated aluminium

| SHELF-W | S1 |
|---------|----|
| EB | • |
| TSI | • |
| TSSG | • |
| TSDA | • |



Schlüter®-SHELF-W-S1 (CURVE, TSDA)

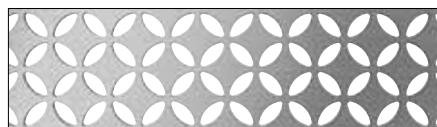
Schlüter®-SHELF-N (for niches)

EB = brushed stainless steel,
TS = textured coated aluminium

| SHELF-N | S1 |
|---------|----|
| EB | • |
| TSI | • |
| TSSG | • |
| TSDA | • |



Schlüter®-SHELF-N-S1 (FLORAL, EB)



STYLE: FLORAL (D5)



STYLE: CURVE (D6)

Colours:
TSI = ivory textured
TSSG = stone grey textured
TSDA = dark graphite textured

Text template for tenders:

_____ units Schlüter®-SHELF-E as a wall storage shelf for the corner area to be integrated during tile installation or for retrofit installation in the joints of an existing tiled surface

Material:

- EB = brushed stainless steel (V2A)
- TS = textured coated aluminium

STYLE design:

- FLORAL (D5)
- CURVE (D6)

Shape:

- S1
- S2
- S3

...to be supplied and professionally installed.

Art.-No.: _____
Material: _____ £/unit
Labour: _____ £/unit
Total: _____ £/unit

_____ units Schlüter®-SHELF-W as a rectangular shelf with trapezoid perforated anchoring legs on two sides for installation in the wall area. It is to be integrated into the tile assembly during tile installation.

Material:

- EB = brushed stainless steel (V2A)
- TS = textured coated aluminium

STYLE design:

- FLORAL (D5)
- CURVE (D6)

...to be supplied and professionally installed

Art.-No.: _____
Material: _____ £/unit
Labour: _____ £/unit
Total: _____ £/unit

Schlüter®-SHELF-N as a rectangular shelf specifically designed for installation in the pre-fabricated niches Schlüter®-KERDI-BOARD-N. It is to be integrated into the tile assembly during tile installation.

Material:

- EB = brushed stainless steel (V2A)
- TS = textured coated aluminium

STYLE design:

- FLORAL (D5)
- CURVE (D6)

...to be supplied and professionally installed.

Art.-No.: _____
Material: _____ £/unit
Labour: _____ £/unit
Total: _____ £/unit